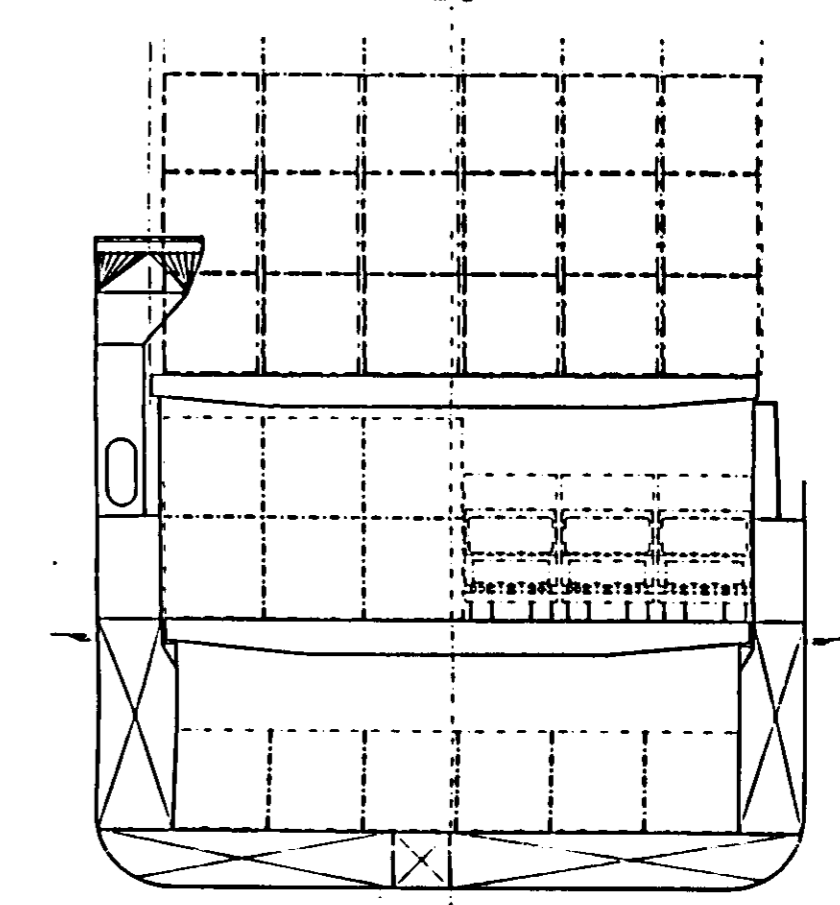
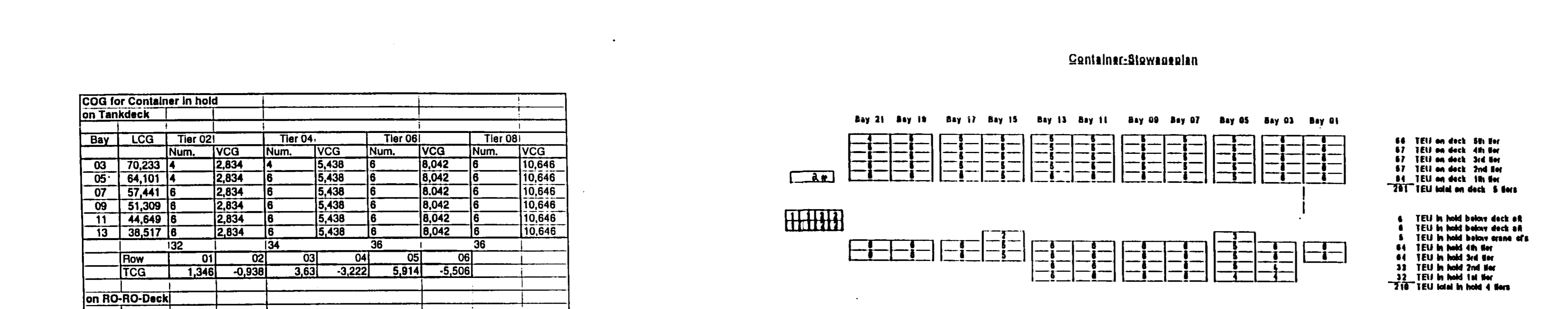
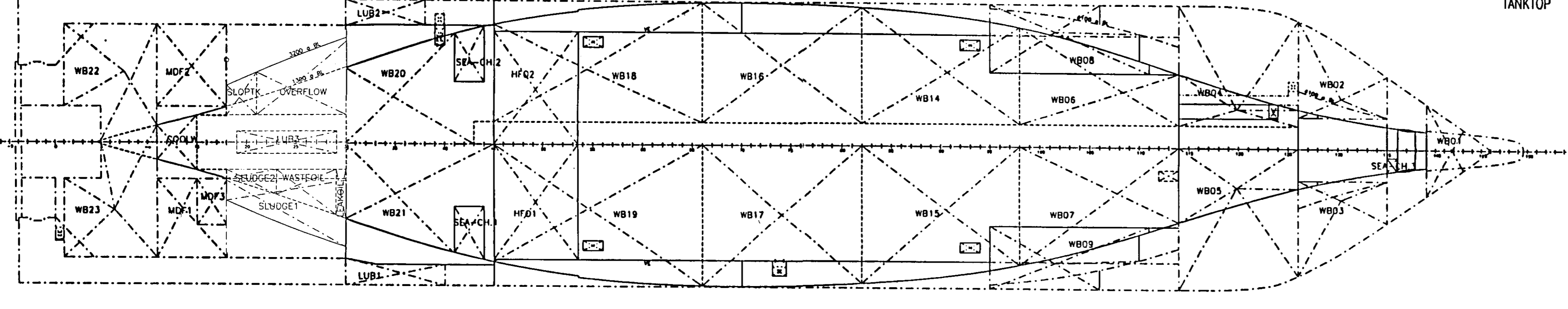
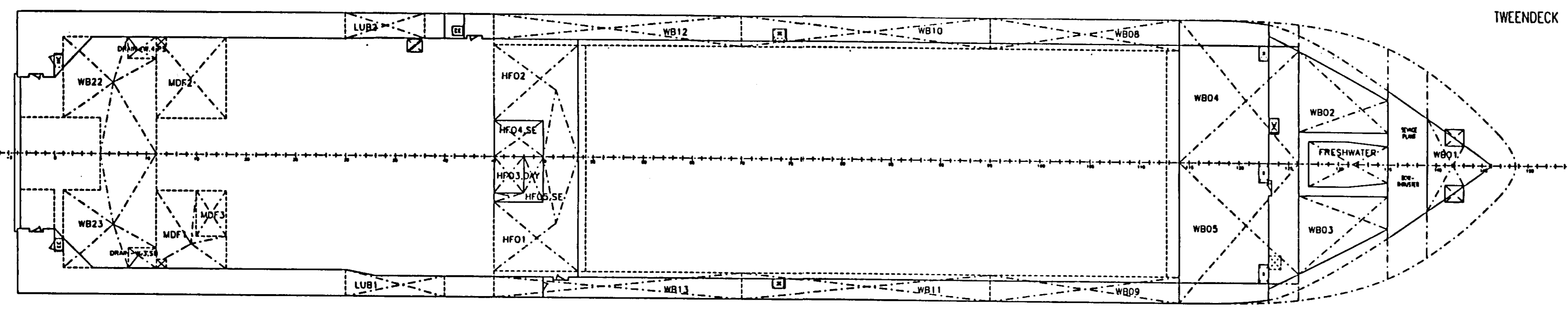
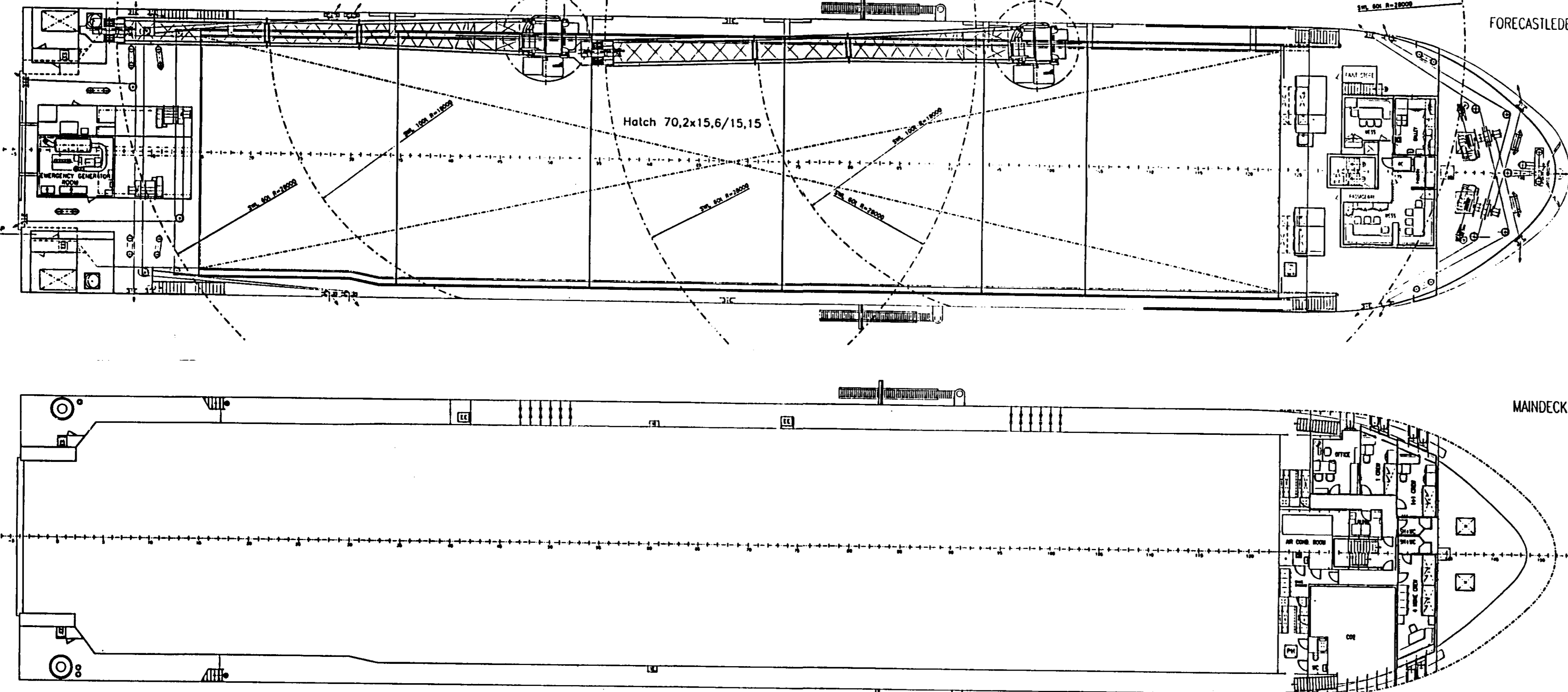
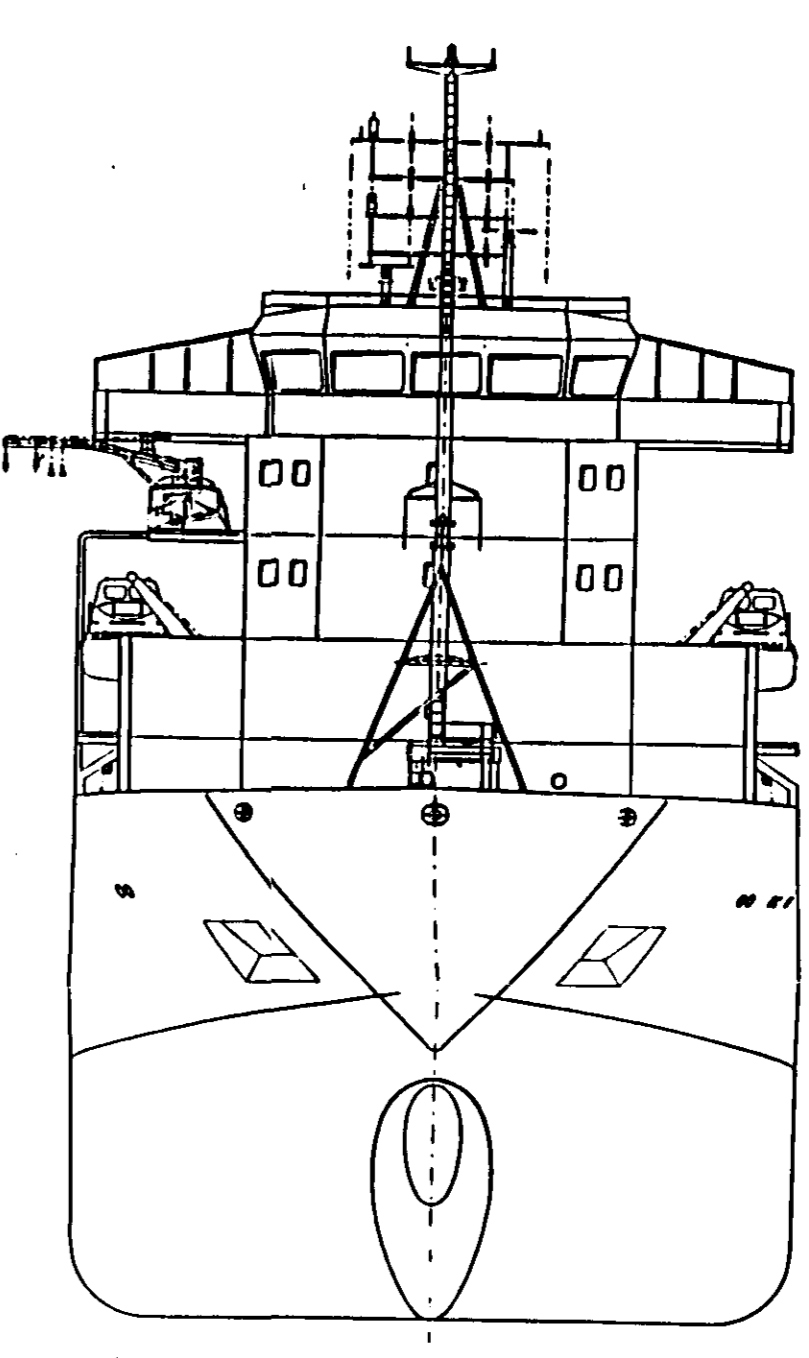


- WHEELHOUSE TOP
- BRIDGEDECK
- 3.DECK
- 2.DECK
- 1.DECK
- FORECASTLEDECK
- MAINDECK
- TWEENDECK
- TANKTOP

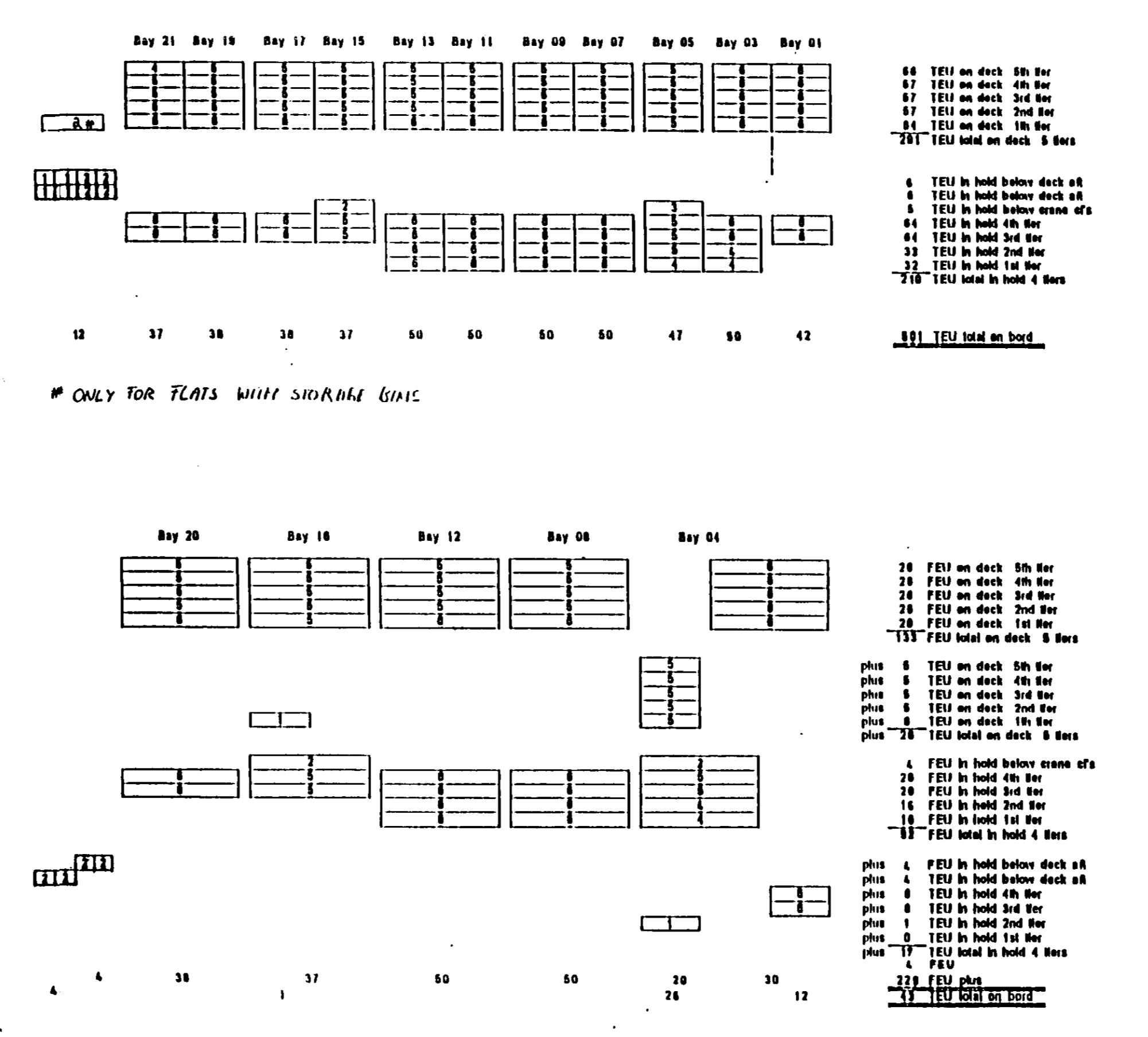


Tank capacities

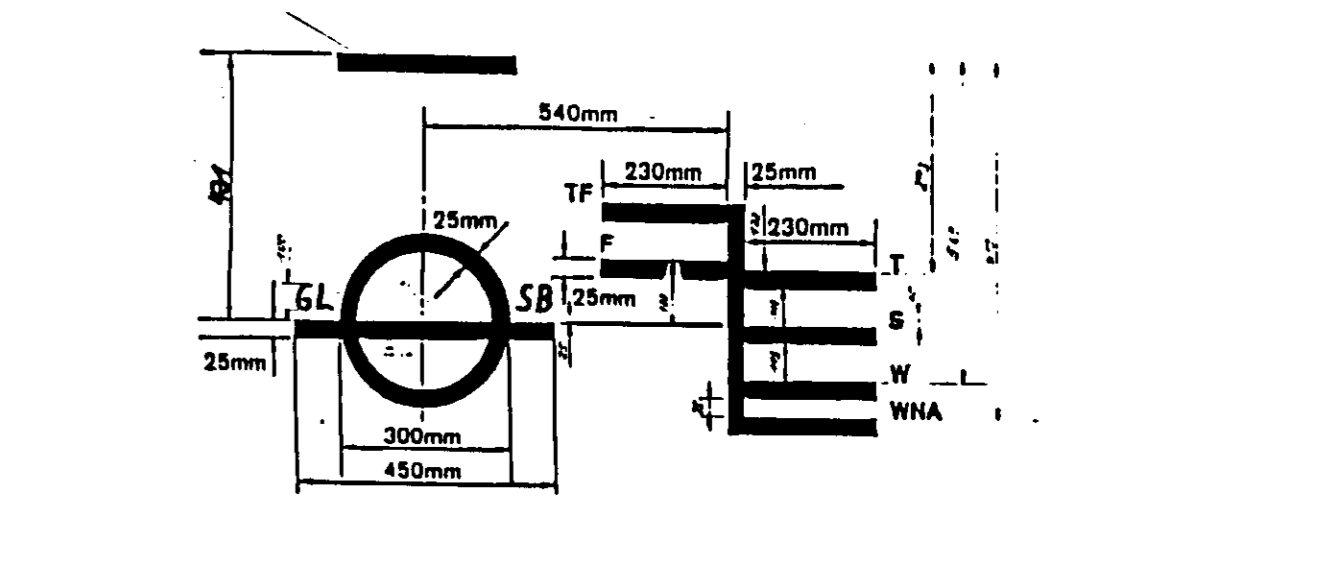
No	Description	Vol. m ³	SG t/m ³	Weight tonnes	LCG m	TCG m	VCG m
1	WB01, CL	157.90	1.025	161.8	92.96	0.00	5.85
2	WB02, PS	34.13	1.025	35.0	84.24	-3.57	6.01
3	WB03, EB	241.67	1.025	247.7	77.80	-3.13	4.51
4	WB04, PS	274.67	1.025	281.5	77.82	-3.94	4.18
5	WB05, EB	61.96	1.025	63.5	68.39	-3.68	0.82
6	WB07, DB, PS	102.79	1.025	105.4	65.87	-7.05	3.77
7	WB08, PS	98.32	1.025	100.7	65.82	-7.17	3.72
8	WB09, PS	144.55	1.025	148.7	53.52	-8.28	4.28
9	WB10, PS	132.92	1.025	137.1	53.65	-8.46	4.28
10	WB11, PS	164.00	1.025	168.3	37.64	-8.29	2.88
11	WB12, PS	127.91	1.025	131.1	38.22	-8.44	4.21
12	WB13, PS	94.93	1.025	97.3	58.38	-4.67	7.79
13	WB14, DB, PS	118.21	1.025	121.2	58.43	-3.91	0.78
14	WB15, DB, PS	108.00	1.025	110.7	48.17	-5.07	0.78
15	WB16, DB, PS	131.45	1.025	134.7	48.17	-4.31	0.77
16	WB17, DB, PS	124.94	1.025	128.1	36.69	-4.84	0.75
17	WB18, DB, PS	154.17	1.025	158.0	24.47	-3.25	0.69
18	WB19, DB, PS	62.58	1.025	64.3	4.67	-3.25	0.69
19	WB20, PS	58.30	1.025	60.6	4.98	-2.62	5.53
20	WB21, PS	73.23	1.025	75.1	55.75	-0.17	3.14
Total Ballast				2724.1	55.75	-0.17	3.14

No	Description	Vol. m ³	SG t/m ³	Weight tonnes	LCG m	TCG m	VCG m
25	FW01, CL	67.69	1.000	67.7	85.16	0.00	4.77
26	COOLW, CL	6.23	1.000	6.2	8.68	0.00	0.80
Total Fresh				73.9	78.66	0.00	4.44
27	HF01, SB	202.22	0.920	186.0	32.30	4.26	4.19
28	HF02, PS	195.66	0.920	180.7	32.37	-4.84	4.20
29	HF03, SB	12.68	0.920	11.7	30.32	1.20	4.77
30	HF04, PS	39.58	0.920	36.4	30.97	-1.20	4.22
31	HF05, SB	24.30	0.920	22.4	32.31	1.66	3.94
42	OVERFLOW	35.1	0.920	32.3	37.17	-3.51	1.96
Total HFO				463.3	31.06	-0.10	4.04
32	LUB1, SB	19.90	0.900	17.9	22.51	0.52	5.48
33	LUB2, PS	18.69	0.900	16.8	22.31	-1.19	5.89
34	LUB3, CL, Circ	6.49	0.900	5.8	15.70	0.00	0.95
Total Lub.				40.8	21.59	0.28	5.16
35	MDP1, SB	26.22	0.900	23.6	9.15	4.86	6.15
36	MDP2, PS	40.89	0.900	36.8	9.76	-4.49	5.99
37	MDP3, DAY	34.48	0.900	31.0	12.91	-2.93	2.39
Total MDP				73.6	9.76	0.00	5.99
38	SLDRGR, SB	1.75	1.000	1.8	13.83	2.21	0.96
39	SLDRGR, PS	29.27	1.000	29.3	16.61	3.73	2.39
40	SLDRGR, DAY	4.18	1.000	4.2	12.91	-2.93	2.39
Total Sldrgr				35.2	16.03	2.87	2.30
41	WATERDECK, SB	6.62	0.920	6.1	17.29	2.45	0.82
40	WATERDECK, PS	1.69	0.920	1.6	19.28	-2.94	0.77
Total Waterdeck				7.7	17.29	2.45	0.82

Container stowage plan



Hold	LCG m	TCG m	VCG m	
Hold tankdeck (without hatchcovers)	3104	53.89	0.15	4.37
Hold tankdeck	2559	53.75	0.15	3.89
Hold ro-ro-deck	6815	40.78	0.12	9.84



- Main particulars - Hauptabmessungen
- Length over all - Länge über alles: 100,83 m
 - Length between perpendiculars - Länge zwischen den Loten: 94,60 m
 - Moulded breadth - Breite auf Spanten: 18,60 m
 - Depth to main deck - Sollenhöhe Hauptdeck: 9,70 m
 - Draught including keel plate thickness - Tiefgang Sommerflor über OKK: 6,640 m
 - Draught above keel - Tiefgang Sommerflor über OKK: 6,627 m

CGC for container in hold on Tankdeck

Bay	LCG	Tier	Num.	VCG	Tier	Num.	VCG	Tier	Num.	VCG	Tier	Num.	VCG
03	70,233	4	2,834	4	5,438	6	8,042	8	10,646				
05	84,101	4	2,834	6	5,438	6	8,042	6	10,646				
07	57,441	4	2,834	6	5,438	6	8,042	6	10,646				
09	51,309	4	2,834	6	5,438	6	8,042	6	10,646				
11	44,849	4	2,834	6	5,438	6	8,042	6	10,646				
13	38,517	4	2,834	6	5,438	6	8,042	6	10,646				

on RO-RO-Deck

Bay	LCG	Tier	Num.	VCG
01	78,878	06	8	8,39
02	78,878	06	8	10,994

Bay 25

LCG	Tier	Num.	VCG
01	31,847	6	8,39
02	25,715	6	8,39
03	18,059	6	8,39
04	12,027	6	8,39

Bay 29

LCG	Tier	Num.	VCG	TCG
01	5,7	06	2	8,39
02	5,7	06	2	10,994

CGC for container on deck

Bay	LCG	Tier	Num.	VCG	Tier	Num.	VCG	Tier	Num.	VCG	
01	77,218	6	14,744	6	17,383	6	19,982	6	22,601	6	25,222
03	71,088	6	14,744	6	17,383	6	19,982	6	22,601	6	25,222
05	84,29	6	14,744	6	17,383	6	19,982	6	22,601	6	25,222
07	57,53	6	14,744	6	17,383	6	19,982	6	22,601	6	25,222
09	51,398	6	14,744	6	17,383	6	19,982	6	22,601	6	25,222
11	44,838	6	14,744	6	17,383	6	19,982	6	22,601	6	25,222
13	38,506	6	14,744	6	17,383	6	19,982	6	22,601	6	25,222
15	31,748	6	14,744	6	17,383	6	19,982	6	22,601	6	25,222
17	25,814	6	14,744	6	17,383	6	19,982	6	22,601	6	25,222
19	18,854	6	14,744	6	17,383	6	19,982	6	22,601	6	25,222
21	12,222	6	14,744	6	17,383	6	19,982	6	22,601	6	25,222

DEADWEIGHT SCALE

FREE BOARD METRES	SALT WATER				DRAFT METRES	FRESH WATER			
	TONNES PER CM	MOMENT CHANGE TRIM	DISPLT IN TONNES	TOTAL DEAD WEIGHT		TONNES PER CM	MOMENT CHANGE TRIM	DISPLT IN TONNES	TOTAL DEAD WEIGHT
0	17	120	1000	5000	7	120	8000	4000	
1	16	100	900	4000	6	100	7000	3000	
2	14	80	800	3000	5	80	6000	2000	
3	13	60	700	2000	4	60	5000	1000	
4	12	40	600	1000	3	40	4000	0	

- GROSS TONNAGE: 5760 GT
- NET TONNAGE: 2579 NT
- WEIGHT OF LIGHT SHIP: 3042 t
- DEADWEIGHT (6.627m o.BL): 5098 t
- DISPLACEMENT (6.627m o.BL): 8140 t

Capacity plan Ladeplan

RECHNER: SCAN PACIFIC

DATE: 19.05.2020

PROJECT: 475-0220.99.03.60.01

SCALE: 1:100

DESIGNER: VOLGAST